

# Dallas-Fort Worth Schluter Facility: 25,000 SQ FT of DITRA-HEAT-DUO



## THE PROJECT

Schluter Distribution Center

## ARCHITECTS

Alliance Architects

## MECHANICAL & ELECTRICAL ENGINEERING

JJA INC

## TILE CONTRACTOR

Wadleigh Tile

## GENERAL CONTRACTOR

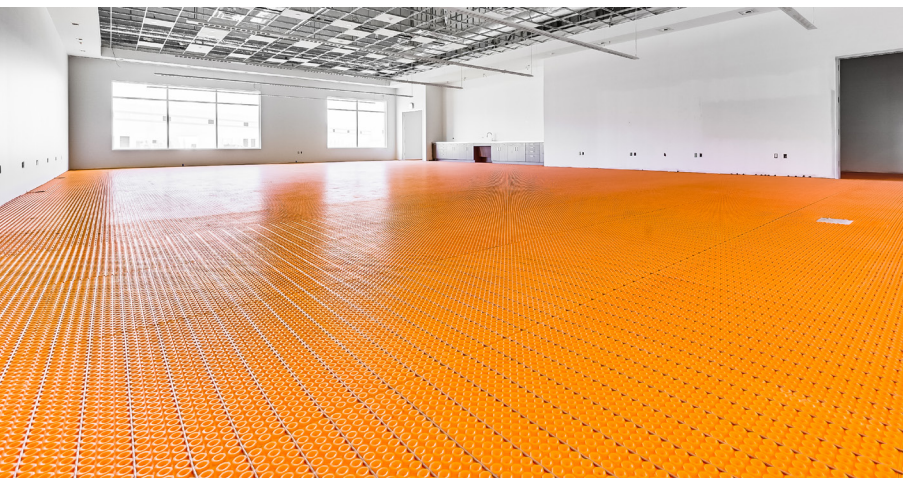
Hillwood Construction

## DATE

November 2020

## LOCATION

Dallas-Fort Worth

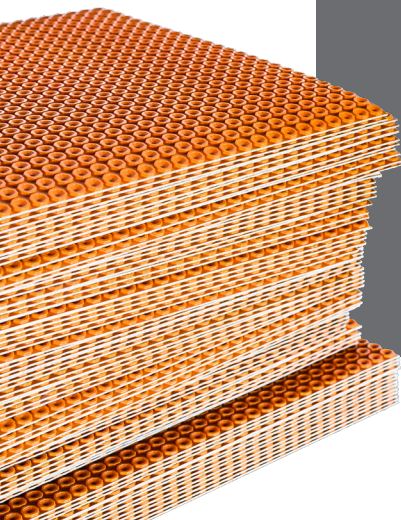


## OVERVIEW

The Schluter facility in Dallas-Fort Worth (DFW) is over 500,000 square feet and features a brand-new distribution, office, and training center. This facility was strategically chosen to enhance the turnaround time on orders. With this addition to our shipping hubs, the goal is to be able to reach the majority of the country within 72 hours after receiving a purchase order.

## THE DITRA-HEAT-DUO INSTALLATION

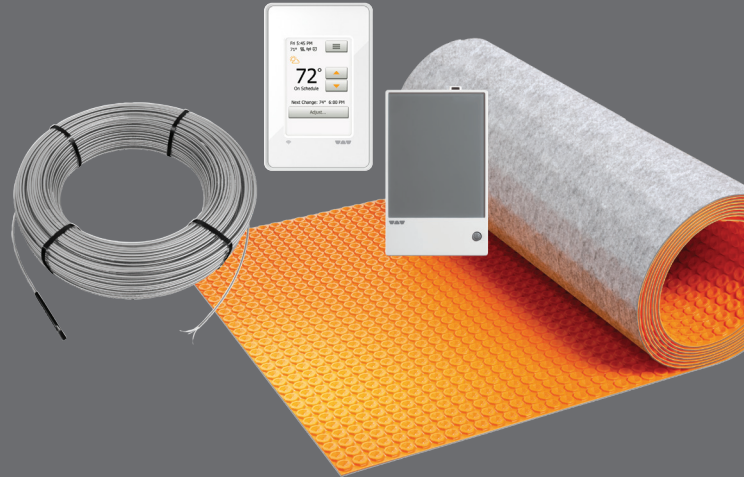
DITRA-HEAT-DUO is installed throughout the massive DFW facility. While the primary goal of the project was to create a comfortable space for employees and visitors, the ambitious project effectively demonstrates how electric floor warming can transform a large commercial building into a warm and inviting space.





### JUST THE NUMBERS

- Facility size: **500,000** sq. ft
- DITRA-HEAT-DUO membrane: **25,000** sq. ft
- DITRA-HEAT-E-HK Heating cable: **15** miles
- DITRA-HEAT-E Thermostats & power modules: **140+**
- Power supply: **240 V , 120 V , 208 V**
- Temperature sensors: **160+**



### CENTRALIZED CONTROL WALL

At 25,000 square feet, the large size of this DITRA-HEAT-DUO installation demanded a lot of hardware to support the floor warming system. Over 140 thermostats and power modules were used in the installation. Three centralized control locations provide the ideal solution to organize and house all these components and are positioned based on room location and synchronization with the HVAC system. Individual zones of the DITRA-HEAT-DUO installation are mapped to corresponding zones of the HVAC system to activate the preferred heating source.

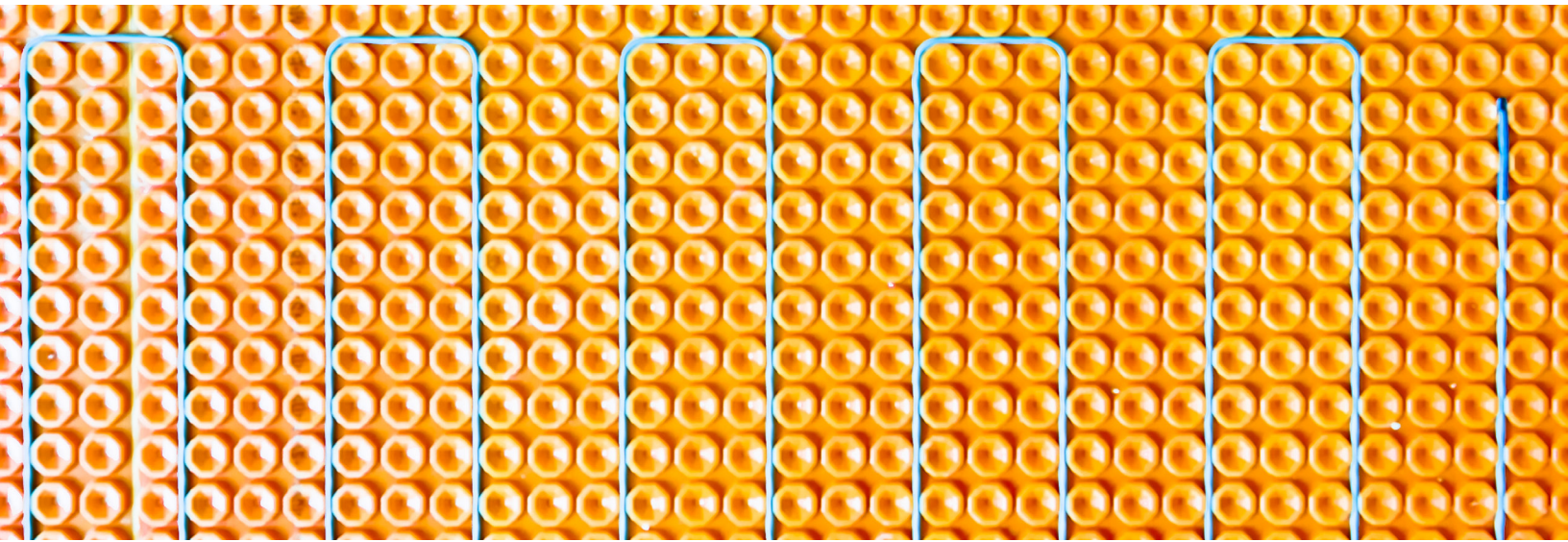
- Centralized control for all thermostats and power modules
- No hardware in sight: clean, uncluttered walls
- Monitoring of the large commercial application at a glance
- Ease of maintenance and repair
- Interchangeable temperature reading points with the use of additional temperature sensors strategically located with cable drops



### THE SCHLUTER GUEST EXPERIENCE

Our guests were the center of our attention in this installation. DITRA-HEAT-DUO is installed in all the main areas where we receive guests for our workshops and other events.

- Training Room – 2665 sq. ft.
- Hands-On Area – 2525 sq. ft.
- Training Lounge & Cafeteria – 3065 sq. ft.



### **DITRA-HEAT-DUO: TRULY VERSATILE SYSTEM**

DFW truly embodies the versatility of the DITRA-HEAT-DUO electric floor warming system, with almost every usage of the system being implemented in the building.

- Multiple power supplies – 120 V, 240 V and 208V applications
- Various floor coverings used in the installation, with a focus on tile and laminate, and both interior and outside facing locations
- Large, uniform zones requiring power modules



### **FLOOR WARMING IN A WARM CLIMATE? YES!**

The DFW facility provided the perfect opportunity to demonstrate how electric floor warming can be an ideal solution even in warm climates. Step inside the building to be immersed in its warm, comfortable vibe!

### **PLUSES ++**

- Provides uniform floor warming from the floor up, for a consistent and comfortable warmth
- Extremely fast response time
- Can warm specific zones, as opposed to the entire installation
- No cold spots make for a more comfortable environment
- Ideal system for installation under tile and LVT—both of which are part of the installation!
- Build time was much faster due to easier installation of electric floor warming system VS other more laborious systems
- Thin assembly and lightweight
- Great for allergies: dust and allergen-free spaces